

SCALE AND ARPEGGIO PATTERNS

The examples below clarify patterns found in this syllabus. Reference should be made to the appropriate syllabus pages for the full requirements for each instrument.

Rhythm patterns for scales

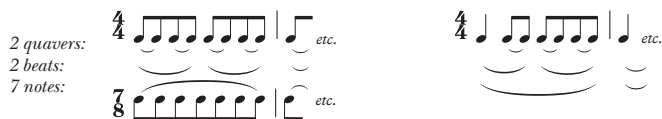
For major and minor scales (all grades) candidates may choose between two rhythm patterns: even notes *or* long tonic. (Chromatic scales should be played with even notes at all grades.)

even notes *or* long tonic



Slurring patterns for scales

even notes *or* long tonic



Natural minor scale



Dominant seventh (*resolving on tonic*)



Double-stop scales

In broken steps



Double-stop scales (cont.)

In parallel

even notes

or long tonic

in sixths:



in octaves:



Patterns for Double Bass only

Scales to a sixth

even notes

or long tonic



Scales to a twelfth

even notes

or long tonic



Arpeggios to a twelfth



Scale in broken thirds



Scale in running thirds

